

HANWORTH ROAD AND BUCKINGHAM ROAD



HANWORTH ROAD

Hanworth Road leading from modern Uxbridge Road towards Hanworth came about as a result of the Enclosure Act. The area near the apex formed by the Hanworth Road and Buckingham Road went on to form part of the Buckingham Park Estate. Strangely this developed more rapidly than Tangle Park (later Marling Park) also being developed at the same time which was much nearer to the Hampton Station. There were only a few properties here in the 1860s and 1870s and the 1861 and 1871 Census names this area at the apex of the Hanworth Road and Buckingham Road as “Hanworth Hedge Corner” as it was the corner of Hampton near the Hanworth boundary hedge.



In 1911 there were 51 inhabited houses and 4 uninhabited houses as well as a Sewage Works and a shop known as Tangley Stores (and Post Office) near the junction with the Uxbridge Road. There were very few houses on the northern side of the road and the present three schools had not yet been built and the land was occupied by Rectory Farm. The Sewage Works, opened in 1899, were located on an extremely

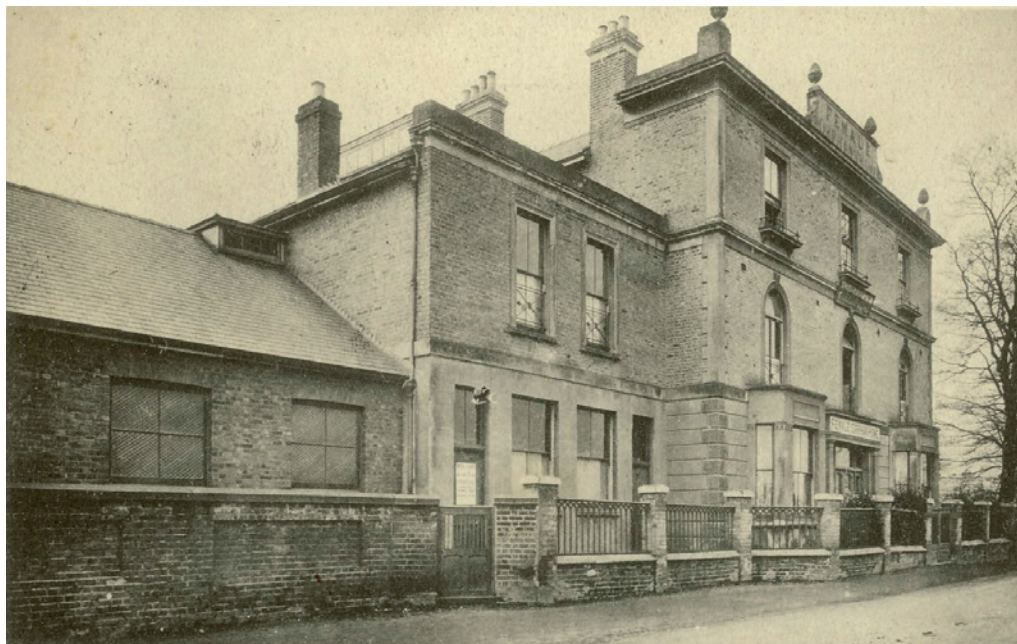
large plot, set back from the road, backing onto the Longford River. There were four cottages called Dean Cottages at the front of this plot which were occupied by the manager and workers at the Sewage Works. Housing in Bishops Grove and Chapter Way now occupies the site. At the extreme northern end of the road, near the Hanworth border, were a row of cottages called Poole's Place.

On the southern side of the road, near the junction with Uxbridge Road, was a very large building known as the Female Orphan Home (Picture top of following page). It housed 32 'scholars', a further 9 'training for service', 4 staff and a visitor in the 1911 Census. (The hall on the left of the building survives; the rest of the building is demolished).

There were a number of large houses on this side of the road. Many of them had been built as part of the Buckingham Estate, started in the early 1880s by Mr Embleton, the Hampton Hill estate agent. Within ten years the development slowed and much land was utilised for nurseries, florists and market gardens. The Census shows the following Nurserymen:

A Wright, F Gale, S Mason, C Williams, T Byatt, F Allen and J Lange.

Florists were: W Lewcock and W Hartley and Market Gardeners were C Underwood and AE Mason. A further 9 heads of households worked at the nurseries and market gardens.



Other occupations in the road reflected a mix of housing but were mainly professionals. They included 4 people of private means, 2 engineers, a marine superintendent, a jeweller's representative, a musician and a farm bailiff and others.

BUCKINGHAM ROAD

Buckingham Road follows the line of a Hounslow Heath-edge track that probably existed in the 17c. The John Rocque map of 1754 shows a track following this heath-edge line. The 1826 Enclosure Map shows evidence of the route of the track. The 1863 OS Map shows most of the road although the extreme northern section, where it joins the Hanworth Road, was not then still existing. The development of the Buckingham Estate by Mr Embleton, the Hampton Hill estate agent started in the early 1880s. This development included some houses on the eastern side of Buckingham Road, near the junction with Hanworth Road. The development slowed within ten years and the estate remained predominantly a nursery area. By the 1956-62 OS map the eastern side of the road was finally almost all housing but the western side remained as nurseries. An application to build the Nurserylands housing estate was finally approved in the late 1970s and half of the western side of Buckingham Road became part of that housing estate. The northern half however was designated as playing fields and open space.

The road had only 11 inhabited properties in 1911, almost all on the eastern side. The western side was lined with nurseries. The 1912 Directory records the following Nurserymen:

William Lewcock, Sydney Mason, Frederick Gale, Charles Page, John Copeland, Robert Buchold, Frederick Fearnley and JJA Allen.

In addition, the following were recorded as florists: Wulf Hancke, J Yates and William Byatt.



Other occupations recorded in the Census included Civil Engineering Consulting, Company Secretary, Schoolmaster and others including Robert Pausey, of private means, living in a large house called Brompton. This was later developed as Cotswold Road.

Much later, Buckingham School was opened in September 1976 in Buckingham Road to serve the needs of the Nurserylands then about to start construction. It was built as a one form entry Junior and Infants School. Further teaching areas and a Nursery were added in 1980. (The photo shows tree planting at the School in May 1980 for the official opening.)

John Sheaf

John Sheaf is the author of "Pictures of Hampton in the 1940s, 1950s & 1960s –The Roads and Buildings, Businesses and Shops, The River and Recreation" published by the Borough of Twickenham Local History Society. It provides a fascinating description of Hampton in the 1940s, 1950s and 1960s including life under wartime conditions. It covers the roads and buildings of the village, the shops, pubs and businesses of that wartime and post-war era as well as the river and recreation. There is a separate section for each main road with details of the significant changes; each with an individual map and related pictures. Changes to other roads are also described as well as information on all new roads, with appropriate images.

This very well-illustrated book, with many pictures in colour, includes over one hundred and thirty historic images and eleven maps. To order a copy please send a cheque for £8.50 (which includes postage and packing), payable to "BOTLHS" to BOTLHS c/o 75 Radnor Road, Twickenham, Middlesex, TW1 4NB. To order online go to www.botlhs.co.uk and go to Publications and click on the image of the cover of the book.